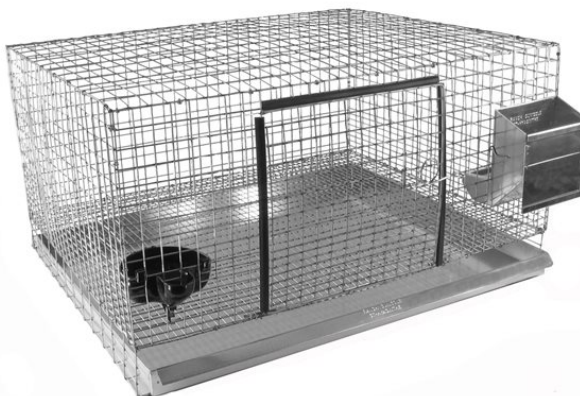


# Legs assembly

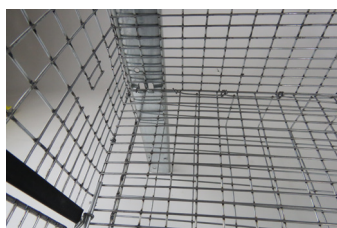
**Welded wire sides**  
**Model #946**



## Assembly



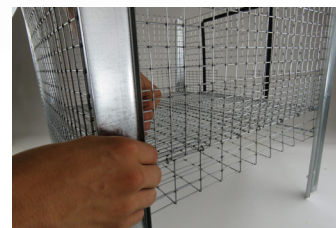
1. Open the middle hook of each legs with a 7/16" combined wrench.



2. Install one leg on one of the assembled cage by inserting the middle hook at the height of the bottom of the cage.



3. Install a bolt, a washer and a nut in the middle hole of the leg.



4. Repeat steps 2 and 3 for each corner and for each cage.

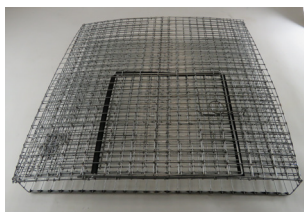


5. Stack two cages one on top of the other by connecting the legs as shown above.



6. Attach each leg using a bolt, a washer and a nut as shown above.

## Pièces



Cage (Not included)



Pack of 4 legs #946



Set of bolts, washers and nuts



7. Repeat steps 5 and 6 to attach an additional level, if desired.

**Ranch**   
**CUNICOLE**

Phone: (450) 799-5170

Fax: (450) 799-5171

info@ranchcunicole.com

www.ranchcunicole.com